

Recent Comments Vexx wrote: "game dont work" posted to *Cheese Patrol 2: Cat Attack!*.

Type here to search

Home » Hobbies & Projects » How To Do It » How to Build an Igloo

How to Build an Igloo

By Michael Rutland

Illustrations by Robert Prince

SAFETY FIRST: Ask an adult to help with tools you haven't used before.



The best-known snow shelter is the igloo. A brilliant use of engineering and resources, this simple dome made out of snow blocks is both strong and versatile.

Arctic cultures such as the Eskimo and the Inuit developed it, and over time they came up with a hundred tricks to make the shelter more comfortable and sturdy, including making the entrance small (to help keep heat in) and melting the inside of the dome and letting it refreeze (for increased strength).

BUILDING AN IGLOO

Get the App!

We've opened up free access to a whole year of *Scout Life* on our app. Download it today!



ADVERTISEMENT

What's Hot



What Are the Signs of Hypothermia and How Do You Treat It?



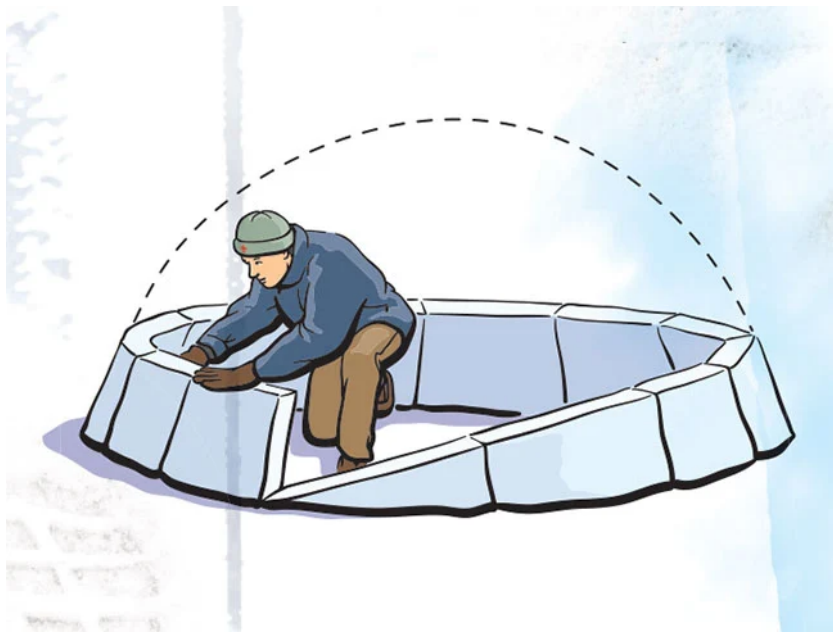
Check Out the 22 Top Toys and Games of 2022



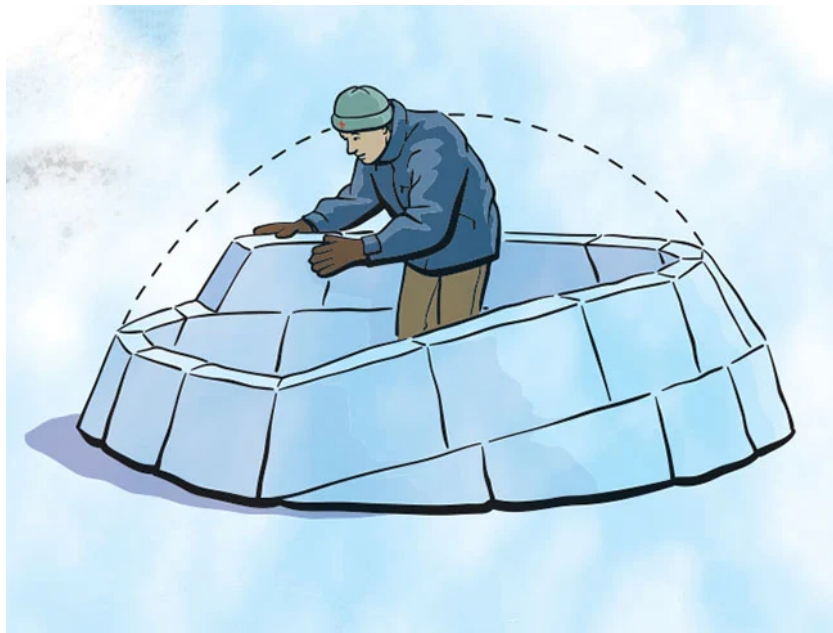
How to Make and Decorate Holiday Sugar Cookies



How to Buy a Great Headlamp or Flashlight



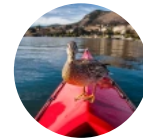
Diameter: Not to exceed 10 feet. Anything bigger would require a perfect dome, which is next to impossible to construct in the field.



Materials: Top layers of dry powder won't work. Pack mounds of snow until they harden, or cut blocks of snow from the depth where your feet stop sinking.



Take a Look at These 7 Wacky



Write a Funny Caption For This Photo



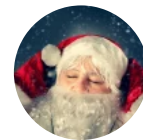
How to Use a Sled to Make a Pulk for Backpacking in the Snow



Ho! Ho! Ho! Laugh at 100 Funny Christmas Jokes and Comics



How to Make a Homemade Snow Globe



Try the Classic Christmas Song Lyrics Quiz



Cheese Patrol 2: Cat Attack!

Subscribe Today!

Subscribe today to get *Scout Life* magazine delivered to your house.

Order online or by phone at (866) 584-6589.

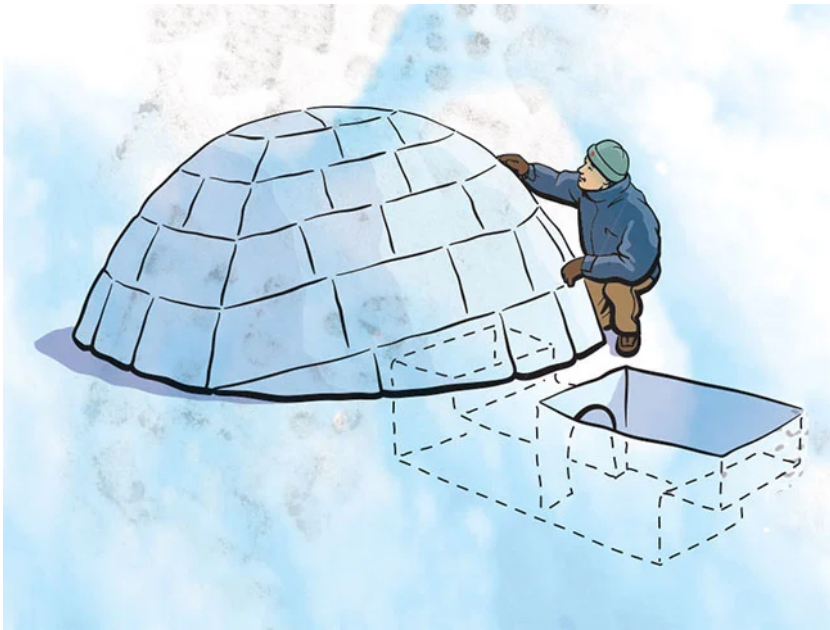


Digital Edition

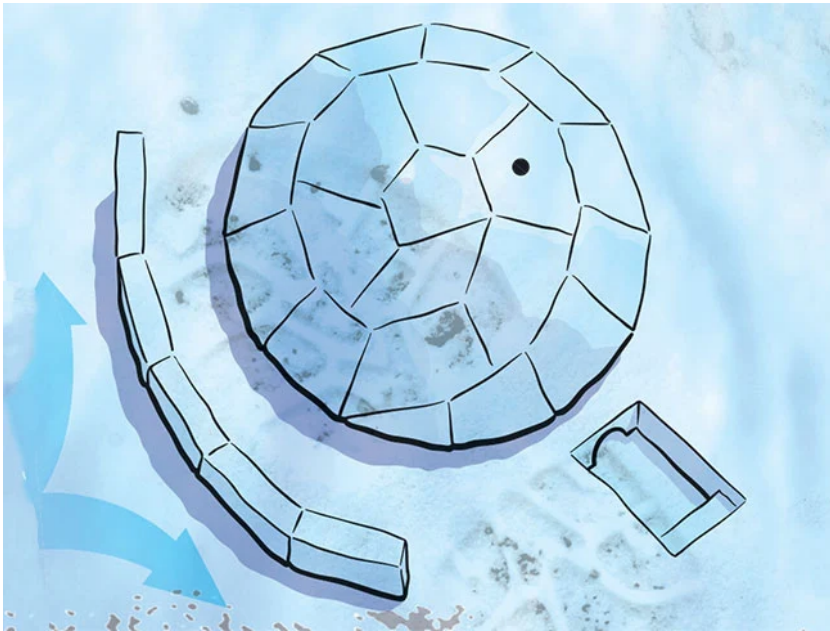
Download the free *Scout Life* app from your device's app store.



This Month's Issue



Entrance: Build a door in the ground, about 18 inches lower than the ground inside the igloo, and tunnel below the wall into the igloo. For proper ventilation, never seal or close the entrance.



Walls: Cut the blocks into a spiral layer, leaning one block against the next. Keep the interior wall smooth so moisture can run down the side of the wall, instead of dripping from the ceiling. Include a vent hole to allow for better circulation.

[First Class 1a](#) [First Class Rank Requirements](#) [Second Class 1a](#)
[Second Class Rank Requirements](#) [Snow shelters](#) [Winter](#) [Winter Camping](#)

Submit a Photo of Your Project

Your first name

Tell us about your project

TheTrainkinzbranch // January 5, 2013 at 7:47 am // Reply

It snows alot here in MA

terminator // January 4, 2013 at 5:22 pm // Reply

Doesnt everyone wish there was snow in FL then on some days we wont have any school and only a whole day of playing in the snow and just having some fun

« 1 2 3 4

Leave a Comment

Please don't use your real name.

Comment *

Nickname

Post Comment

Now on Scoutlife.org

[Scoutlife.org](#)

[Games](#)

[Jokes](#)

[Outdoors & Gear](#)

[Hobbies & Projects](#)

[Scouts](#)

[Contests and Giveaways](#)

[Subscribe](#)

Scout Life magazine



Subscribe today!

Follow Scout Life



Contact Scout Life

ONLINE: scoutlife.org/contact-us

PHONE: ☎ 866-584-6589

MAIL: 1325 W. Walnut Hill Lane, P.O. Box 152401, Irving, TX 75015-2401

Join Scouting



Visit beascout.org to find out how you can get involved in Scouting.

[Subscribe](#) [Subscriber Services](#) [Contact Us](#) [Advertise](#) [Join Scouting](#) [Privacy Policy](#)